

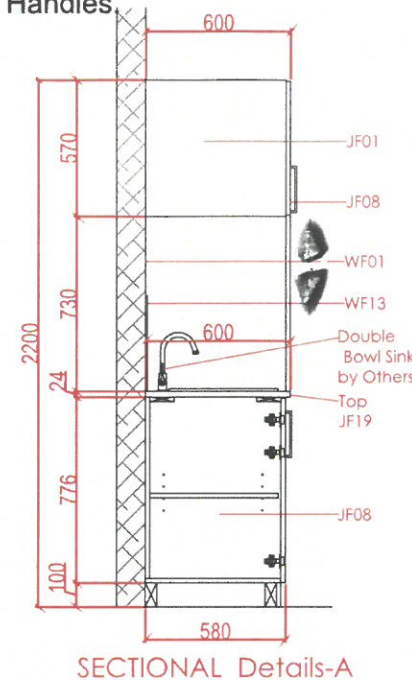
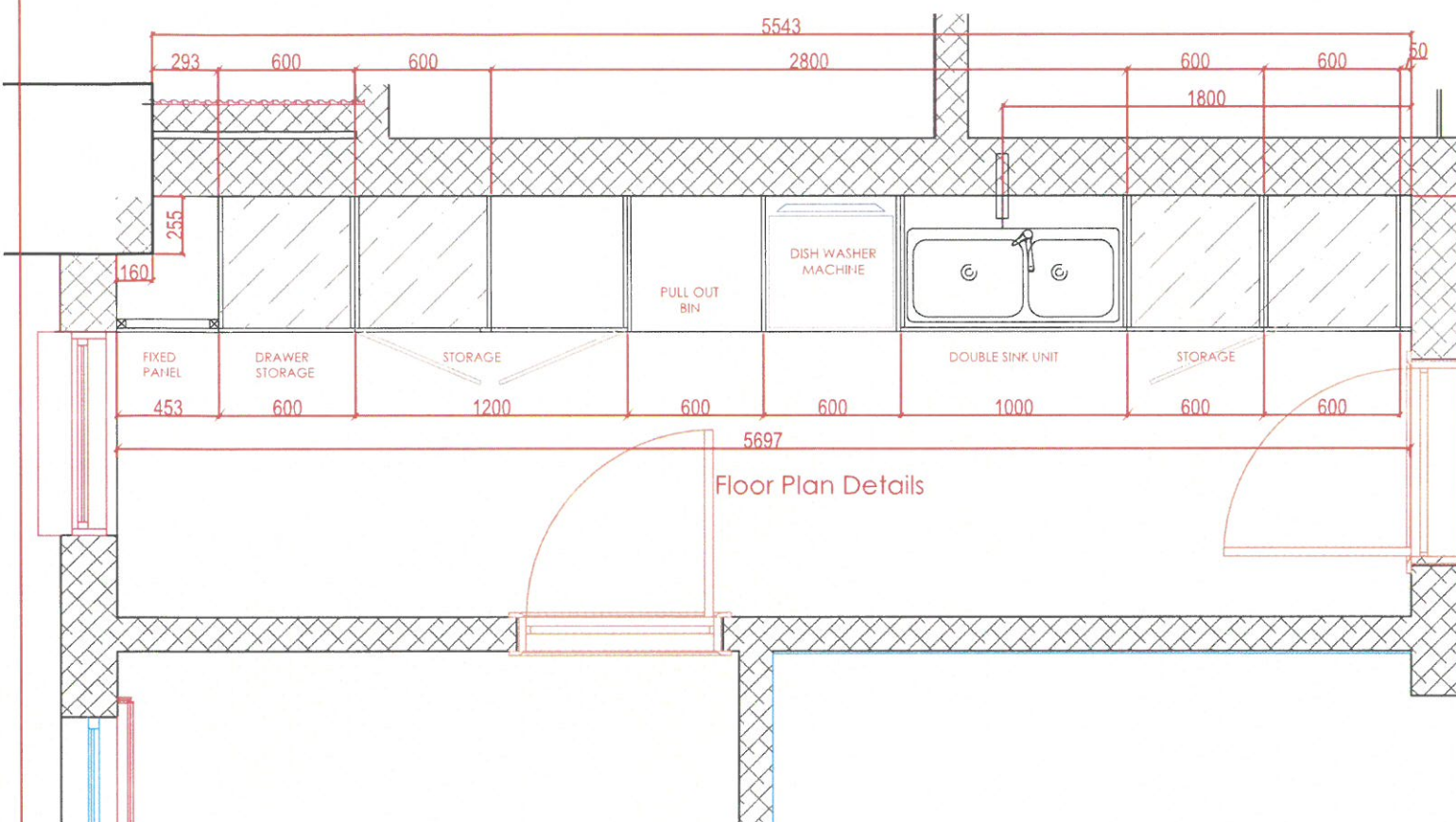
Date	Description
DSD-V1-ID-2/10/2024	- REV1
DSD-V1-ID-9/11/2024	- REV2
DSD-V1-ID-5/12/2024	- REV3
DSD-V1-ID-16/1/2025	- REV4

**Joinery**  
**J12- BOH Teapoint Joinery**

ITEM M ON THE LIST

QTY 1

ADJUSTABLE SHELVES TO ALL CABINETS  
JF05 LAMINATE WITHIN THE CARCASS  
JF07 Handles.



**FINISHES**

**JF08**

Finish: H3359 ST32  
Light Natural Davenport Oak Laminate Finish



**JF01**

Colour: W1000 ST9  
Premium White Laminate

**JF19**

Colour: U7081 ST9



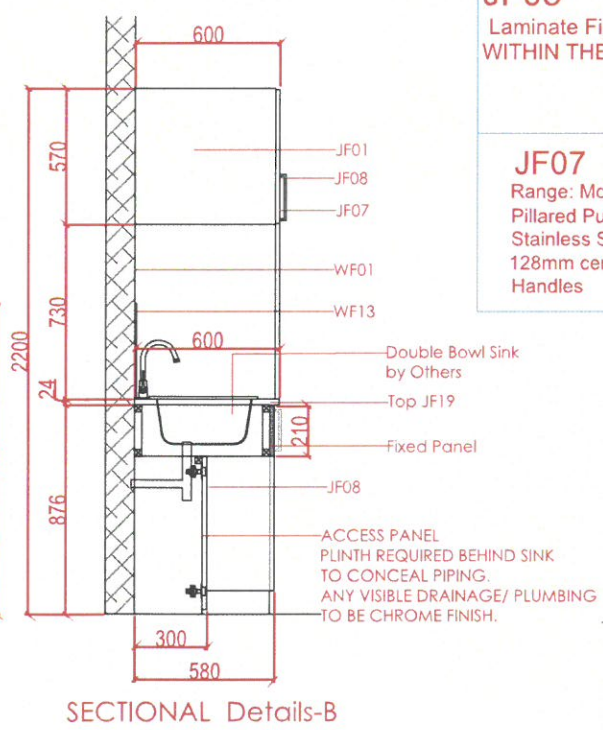
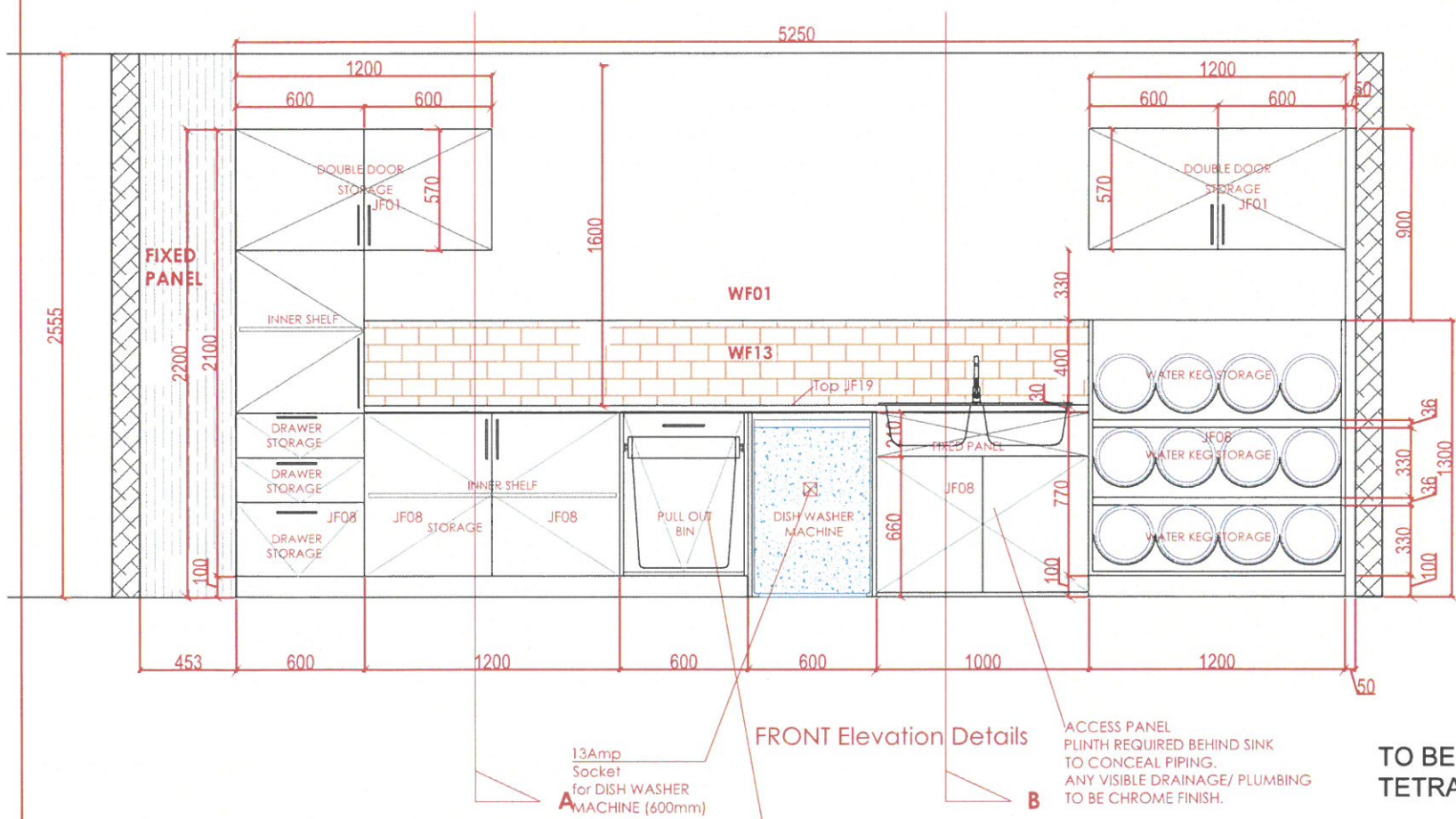
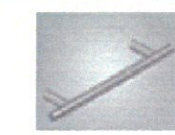
**JF05**

Laminate Finish:  
WITHIN THE CARCASS



**JF07**

Range: Mode Cabinet 'T'  
Pillared Pull Handle Colour: Stainless Steel Size: 128mm centers Handles



**TO BE APPROVED BY TETRA PARK**



**FOR APPROVAL**

Project No. : ---  
Scale : N/A  
Drawn by : OBJ  
Checked : OBJ  
Cad File : CAD\_FILE

Sheet title  
**Joinery J12- BOH Teapoint Joinery**  
**Floor Plan , Elevation and Sectional Details**

Dwg No. : WS-DS-SD-TP-015  
No. : SHEET 1